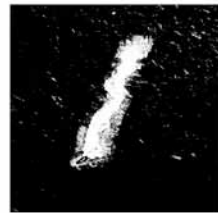


2010 ACCESSIBILITY GUIDE



MEET minneapolis™
Official Convention + Visitors Association

Table of Contents

Welcome Letter	1
Introduction.....	2
Getting Here	3
Getting Around.....	6
–Parking Info	8
–Map	10
Minneapolis Convention Center	12
Accessible Hotels.....	14
Accessible Dining.....	18
Downtown Attractions.....	28
Equipment & Services.....	28
Equipment Rental	29
Links & Additional Information	29

Dear Visitor,

On behalf of Meet Minneapolis Official Convention and Visitors Association and the Minneapolis Advisory Committee on People with Disabilities, we welcome you to our fine city.

Meet Minneapolis markets the city as a premier destination for conventions and meetings, group tourism and leisure travel. Meet Minneapolis staff, its partners, local businesses, civic leaders and the community have formed a partnership to service your needs as a visitor.

For over 35 years, the Minneapolis Advisory Committee on People with Disabilities has teamed with Minneapolis' elected officials, department heads and the business/entertainment community to address access issues that impact our lives daily.

Together, our two organizations launched an access survey project where the Committee surveyed a number of downtown partner restaurants and hotels in March and April 2005.

Provided is a snapshot of the level of access when the survey was conducted, along with additional accessibility information that might be helpful to you. Please note that access—of course—is fluid and frequently changes with placement of furniture or structural modifications.

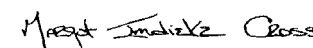
We'd like to publicly thank the members of the Committee's Access Survey Team for all their hard work and dedication, especially Dorothy Balen, Ken Brown, Stuart Cross, Martha Hage, Frank Morisano and Nicole Roberts.

We hope you enjoy your visit to Minneapolis!

Sincerely,



Melvin Tennant, CAE
Meet Minneapolis
President and CEO



Margot Imdieke Cross
Advisory Committee
Chairperson



Every effort has been made to make this publication as accurate as possible. Please call listed organizations to confirm information and request additional details. No portion of this publication may be reproduced without written permission from Meet Minneapolis.

Copyright © 2005 by Meet Minneapolis

WELCOME TO MINNEAPOLIS

Vibrant. Beautiful. Cosmopolitan. Home to fine dining, spectacular shopping and culture galore, Minneapolis offers something for everyone—including travelers of all kinds. Our city is a leader in its commitment to accessible public space. We even instituted a pedestrian ramping program for its streets decades before the Americans with Disabilities Act (ADA) took effect.

The award-winning Minneapolis Advisory Committee on People with Disabilities is the city's primary organization representing the interests and news of our city's disabled residents, workers and visitors. Created in 1991 by the Minneapolis City Council, they are charged with expanding opportunities for people with disabilities and advocating policies and programs that will promote the independence of persons with disabilities while protecting their rights to participate fully in the community.

Richard F. Jost, executive director of the Minnesota Paralyzed Veterans of America commends, "Minneapolis is one of the most accessible cities you will ever find." Whether you're visiting for business or pleasure, you'll discover that we are attentive to the needs of all our visitors. You'll want to come back again and again.

For an index of topics covered in this guide, please go to page 40.

GETTING HERE

Halfway between NYC and LA, home to a Delta hub and the 14th busiest airport in the country, Minneapolis is your gateway to the globe.

By Plane

The Minneapolis-St. Paul International Airport (MSP) offers an array of services and is accessible to people with disabilities:

PASSENGER PICK-UP AND DROP-OFF: Locations for passenger pick-up (lower level roadway/Baggage Claim) and drop-off (upper level roadway/Ticketing Level) may be used at your convenience if you arrive at the airport by personal vehicle, taxicab or limousine. The curb cuts accommodate wheelchairs. There are also designated passenger transfer areas for persons with disabilities on both levels by Doors 1, 2 and 6. (Door 1 is the first door you come to as you approach the Lindbergh Terminal.)

RESTROOMS: All restrooms at the Lindbergh and Humphrey Terminals are equipped with extra-wide stalls and side grab bars.

- + One is located in the family room near the entrance to Concourse C.
- + Two others are near gates C1 and C23.
- + One is located at each end of the Baggage Claim level.
- + One is in the Tunnel level approaching the Short Term parking ramp.

There are three companion care/unisex restrooms at the Humphrey Terminal:

- + On the first floor, the restroom is located across from the Airport Police Office, between Doors 3 and 4.
- + On the second floor, there are restrooms across from gates H4 and H6.

TELEPHONES: All pay telephones in the Lindbergh Terminal are hearing aid compatible. Phones with TDD capability can be found in several locations. Phones with TDD capability at the Humphrey Terminal are located on each end of the terminal on the first and second levels.

WHEELCHAIRS/ELECTRIC CARTS: Airlines provide wheelchairs for use throughout the Lindbergh and Humphrey Terminals. Mention your need for a wheelchair in the Terminal when you make your flight reservation. Most airlines have information about wheelchair access and other services available upon request. Additionally, electric carts are available to transport travelers who are elderly or disabled throughout the Lindbergh Terminal.

In response to customer input, the “cart stop” approach was adopted at MSP to provide the best electric cart service to the traveling public. The cart stops are clearly marked with signs above blue chairs imprinted with the disabilities logo.

- + The electric carts are scheduled to pick up passengers every 10-15 minutes.
- + You will find “cart stops” directly inside security and at every gate along the C, D, E, F and G Concourses.
- + Consult your airline for services elsewhere.

SPECIAL NEEDS: Volunteers are available to assist travelers with special needs.

- + The Travelers Assistance main office and waiting area is located near the entrance to Concourse C.
- + Information desks are found in six locations.
- + There is also an information booth on the Tram Level, near the Tram and exits to parking.
- + An information booth is located on the first floor at the Humphrey Terminal.

You can view the MSP Airport’s entire accessibility guide online at www.msairport.com/MSP/Travelers_Guide/Accessibility_Guide.

By Bus

Looking for an alternative to flying? Enjoy budget travel on the bus. Minneapolis Saint Paul is easily accessible via Greyhound from virtually all major points of departure. Our convenient downtown Greyhound station makes getting to any hotel with taxis or shuttles a breeze. For information, visit www.greyhound.com or call 612.371.3325.

By Megabus

Daily express bus services connecting Minneapolis with major midwest cities start at \$1. www.megabus.com/us or call 1.877.462.6342

By Train

A ride on the rails is more your style? Amtrak offers the comfort and adventure of train ride with the ease of debarking in our neighboring city of Saint Paul. From there, it’s an easy cab or shuttle ride to downtown Minneapolis. Visit www.amtrak.com or call 1.800.872.7245.

GETTING AROUND

Navigating your way through Minneapolis is easy, thanks to a variety of transportation options available for travelers with disabilities.

By Bus And Light Rail Transit

Metro Transit's city buses and light rail transit trains are accessible for all riders and provide an affordable means of getting around the city. Every bus has a wheelchair lift; drivers are trained to help customers use the lift and secure their wheelchairs safely. Customers with disabilities should board first and exit last. Additionally, Hiawatha Line lightrail offer step-free boarding, and are equipped with designated sections for customers using wheelchairs. Plus, all station platforms are fully accessible.

Instructions can be found in an Accessible Transit brochure available at Metro Transit stores, or by calling 612.373.3333.

By Metro Mobility

For more personalized service, consider using Metro Mobility. This ADA Paratransit Service is available for people who are unable or have extreme difficulty using regular route transit service because of a disability or health condition. Trips can be scheduled for any purpose. All trips are treated equally, whether a rider is traveling to a doctor's appointment, going shopping or meeting friends for dinner.

ADA Paratransit Service is a shared-ride public transportation system, so routes and schedules are designed to transport multiple passengers at one time to multiple destinations. Please note that arrangements to utilize Metro Mobility must be made prior to your trip here. To apply for service or for more information, call 651.602.1111 (TTY 651.221.9886) or visit www.metromobility.org.

By Skyway

One of Minneapolis's most unique features, our extensive skyway system allows all visitors to travel from one end of the city to the other in climate-controlled bliss. Whether it's snowing outside or blisteringly hot, the skyways will remain a comfortable 70 degrees. One floor above ground, this eight-mile system links businesses, shopping, hotels and restaurants together with enclosed walkways and is accessible for wheelchairs and other apparatus.

By Taxi Or Shuttle

Several taxi and shuttle services also offer accessible options. Here are a few to try:

- | | |
|---|--|
| + Airport Taxi
952.928.0000
www.airport.towntaxi.com | + Super Shuttle
1.800.BLUEVAN,
612.827.7777
www.supershuttle.com |
| + Rainbow Taxi
612.332.1615 | |

By Car or Van Rental

- | | |
|--|---|
| + All Day and Night Limousine
763.561.0407
www.alldaylimo.com | + Enterprise Rent-A-Car
612.501.8403
www.enterprise.com |
| + Avis Rent-A-Car
612.432.0247
www.avis.com | + Payless Car Rental
727.328.8777
www.paylesscarrental.com |
| + Carey Limosine
Minneapolis/St.Paul
612.627.6063 | + Premier Transportation
612.722.4467
www.premiertrans.com |
| + City View & White Knight
Limosine, Inc.
952.832.5197
www.cityviewlimo.com | + ReliaDrive
888.RELIA701
www.reliadrive.com |
| + Eclipse Transportation
651.293.1111
www.eclipsecars.com | + We Drive U
952.831.2160
www.wedriveu.com |

PARKING

Downtown Minneapolis parking is plentiful and travelers with disabilities will find many options to meet their needs. Three ramps within two blocks of the Minneapolis Convention Center are equipped to handle vans with heights over eight feet. Additionally, 20 other ramps throughout the downtown area can accommodate vans of most sizes. Please see the following parking list and map for detailed information.

Within Two Blocks of Minneapolis Convention Center					
MUNICIPAL RAMPS			PRIVATE LOTS AND RAMPS		
Name of Ramp	# Spaces	Maximum Van Height	Name/ Location	# Spaces	Maximum Van Height
Hilton Hotel	1,176	7'	Allied	55	Surface Lot
Leamington	2,070	7'	Allright	37	Surface Lot
Loring (Hyatt Hotel)	750	6'	Commonwealth	30	Surface Lot
Orchestra Hall (separate accessible ramp)	1,179	6' 7" 9' 6"	Loop (3rd Ave/ Central Lutheran)	Surface-321 Ramp-289	8' 2"
Plaza	859	6' 7"	MCC Ramp (3rd Ave)	600	8' 2"
			Millennium Hotel	300	6' 8"

Downtown Hotels and Building Ramps					
MUNICIPAL RAMPS			PRIVATE LOTS AND RAMPS		
Name of Ramp	# Spaces	Maximum Van Height	Name/ Location	# Spaces	Maximum Van Height
4th Street Garage	1,285	8'	Block E Standard Parking (Graves601)	533	8' 2"
5th Street Garage	1,606	7'	City Center (Marriott)	512	6' 6"
7th Street Garage	3,030	8'	Dain Rauscher	210	7'
Center Village (Embassy Suites)	1,185	7'	DoubleTree Guest Suites	127	12'
Court House Ramp	300	7'	Gaviidae	490	6' 7"
Gateway Ramp	1,397	7'	LaSalle Plaza Standard Parking (Residence Inn)	830	8' 2"
Government Center	1,303	6' 8"	Macy's/ Radisson Hotel	850	6' 9"
HAAF Garage	791	7'	Northstar Center/ Crowne Plaza	1,009	6' 5"
Hawthorne Garage	975	8' 2"	Target Store	594	2nd-8' 2" 3rd-7'
Hotel Ivy	200	7'6"	Young Quinlan Building		8' 1/2"
Hennepin @ 10th St	643	1st-8' 3" 2nd-6' 8" 3rd-8' 2"			
Loring Ramp (Hyatt)	750	6'			
Marquette Plaza	232	12"			

MINNEAPOLIS CONVENTION CENTER

In 2002, a major expansion brought the entire Convention Center up to current ADA standards. In fact, the building received the Minnesota Access Achievement Award, presented by the Minnesota Society of Architects, for its attention to disability access. Here are just some of the reasons why:

Elevators—There are three elevators in the Convention Center, all equipped with Braille designation at the cabin controls and on the door jambs. The highest controls are 44 inches. There is an auditory signal at each level, and each elevator will accommodate two scooters or wheelchairs.

Signage—Informational and directional signage is located overhead. Signs indicating meeting rooms and restrooms are on the walls adjacent to the doorways and have Braille designation.

Meeting rooms—All meeting rooms are wheelchair accessible. Doors are typically kept open during meetings and all doors have lever handles.

Restrooms—Wheelchair accessible restrooms are available on all levels of the Convention Center. There is one wheelchair accessible stall in each restroom designated as such. The setup of facilities within each of the toilet stalls varies between restrooms. All restrooms have faucets with push controls.

Telephones and alarm system—Public phones are located on all levels throughout the Convention Center and accommodate wheelchair access. There are handsets with volume controls at each bank of public phones. A TDD is located on Level One. Additionally, the alarm system in the Convention Center has both auditory and visual components. Convention Center staff will direct attendees in the event of an emergency.

Parking and skyway—Parking is located in the open lot and parking garage near the Convention Center. Access is gained off of Third Avenue South. There are also 11 accessible parking lots and ramps within two blocks of the Convention Center. Plus, the skyways from the Convention Center to most downtown hotels are entirely enclosed, with power doors along the route.

Auditorium—The state-of-the-art auditorium at the Minneapolis Convention Center features wheelchair seating in various locations. Sound enhancement tools are also available.

Drinking fountains—There are numerous drinking fountains throughout the facility and high-lo fountains at all locations.

Scooter and Wheelchair Rental—The Mobility Shop is the exclusive on-site provider for mobility equipment at the Minneapolis Convention Center. The Mobility Shop makes it easy to rent and reserve equipment through www.themobilityshop.com or by calling toll free 888.404.5554.

ACCESSIBLE HOTELS

Minneapolis Saint Paul's 30,000-plus hotel rooms range from budget lodging to plush accommodations. Downtown Minneapolis alone boasts more than 6,000 rooms—with 3,500 attached to the Minneapolis Convention Center and various other attractions via skyway.

The following downtown hotels have been surveyed and rated by the Minneapolis Advisory Committee on People with Disabilities.

NAME, ADDRESS & PHONE	PARKING	ENTRANCE	REGISTRATION DESK	PUBLIC RESTROOMS	INTERIOR	ROOM SECURITY	ROOM ACCESS	RESTROOM ACCESS	DEAF ACCESS	BLIND ACCESS	ROOM COUNT / WHEELCHAIR	ROOM COUNT DEAF	COMMENTS
Best Western Normandy Inn and Suites 405 South 8th Street 612.370.1400	Excellent	Average	Poor	Good	Good	Average	Average/ Bed 22" high	Poor	Yes—1 portable system onsite	No Braille room numbers Yes good lighting	4 Total / no roll-in showers	1	
Comfort Suites Minneapolis—Downtown 425 South 7th Street 612.333.3111	Excellent	Excellent	Poor	Average / 36" stall	Good	Average	Average/ Bed 25" high	Average/ No roll-in showers	Yes—portable systems, will rent quantity needed	No Braille room numbers Yes good lighting	6 Total / no roll-in showers	Whatever quantity is needed	
Crowne Plaza Northstar Downtown Minneapolis 618 2nd Avenue South 612.338.2288	Excellent	Excellent	Good	Good	Good	Average	Excellent/ Bed 25" high	Good	Yes—portable systems, will rent quantity needed	Yes Braille room numbers Yes good lighting	4 Total / 1 roll-in shower	Whatever quantity is needed	
DoubleTree Guest Suites 1101 LaSalle Avenue 612.332.6800	Excellent	Excellent	Good	Average / 42" stall	Good	Average	Excellent/ Bed 25" high	Excellent	Yes	Yes Braille room numbers Yes good lighting	11 Total / 4 roll-in showers	11	Registration desk pull-out shelf
Grand Hotel 615 2nd Avenue South 612.373.0423	Average	Good	Excellent	Good	Excellent	Average	Average/ Bed 25" high	Average/ No fold down seat in shower	Yes—portable systems, will rent quantity needed	Yes Braille room numbers Yes good lighting	8 Total/4 roll-in showers	Whatever quantity is needed	Wheelchair lift right inside entrance, exit in lounge area
Hilton Minneapolis 1001 Marquette Avenue South 612.376.1000	Excellent	Excellent	Excellent	Good	Good	Average	Average/ Bed 27.5" high	Good	Yes	Yes Braille room numbers Yes good lighting	24 Total / 9 roll-in showers	16 portable systems	

NAME, ADDRESS & PHONE	PARKING	ENTRANCE	REGISTRATION DESK	PUBLIC RESTROOMS	INTERIOR	ROOM SECURITY	ROOM ACCESS	RESTROOM ACCESS	DEAF ACCESS	BLIND ACCESS	ROOM COUNT / WHEELCHAIR	ROOM COUNT DEAF	COMMENTS
Holiday Inn Express Hotel & Suites Downtown Minneapolis 225 South 11th Street 612.341.3300	Good	Excellent	Excellent	Good	Good	Average	Excellent / Bed 22" high	Excellent	Yes-1 portable system onsite	Yes Braille room numbers Yes good lighting	5 Total / 1 roll-in shower	Whatever quantity is needed	
Hyatt Regency Minneapolis 1300 Nicollet Mall 612.596.4506	Excellent	Excellent	Average	Average / 36" stall	Good	Average	Average / Bed 24" high	Average / no fold down seat in shower	Yes-3 portable systems	Yes Braille room numbers Yes good lighting	18 Total / 6 roll-in showers	3	
Millennium Hotel Minneapolis 1313 Nicollet Mall 612.332.6000	Excellent	Good	Average	Good	Average	Average	Average / Bed 27.5" high	Average/ Tubs only	No	Yes Braille room numbers Yes good lighting	8 Total / no roll-in showers		
Marquette Hotel 710 Marquette Avenue 612.333.4545	Excellent	Average	Excellent	Good	Good	Average	Average / Bed 25" high	Excellent	Yes-1 portable system onsite	Yes Braille room numbers Yes good lighting	3 Total / 3 roll-in showers		
Minneapolis Marriott City Center Hotel 30 South 7th Street 612.349.4000	Excellent	Average	Poor	Good / 42" stall	Average	Average	Average / Bed 24" high	Good/ Tubs only	Yes-1 portable system	Yes Braille room numbers Yes good lighting	11 Total / no roll-in showers	1	
Radisson Plaza Hotel Minneapolis 31 South 7th Street 612.339.4900	Excellent	Excellent	Poor	Good	Excellent	Average	Average / Bed 27.5" high	Good	Yes	Yes Braille room numbers Yes good lighting	14 Total / 4 roll-in showers	10	
Residence Inn by Marriott -Downtown Minneapolis City Center 45 South 8th Street 612.677.1000	Excellent	Good	Good	Good	Good	Average	Average / Bed 22" high	Average	Yes-portable systems	Yes Braille room numbers Yes good lighting	6 Total / 2 roll-in showers	Whatever quantity is needed	Registration desk pull-out shelf

ACCESSIBLE DINING

Combining worldly sophistication, local charm and hot + new trends, Minneapolis has a culinary surprise around every corner and around the clock.

The following downtown dining establishments have been surveyed and rated by the Minneapolis Advisory Committee on People with Disabilities.

NAME, ADDRESS & PHONE	TYPE	PARKING	ENRANCE	FURNITURE	RESTROOMS	INTERIOR	DEAF/HOH ACCESS	BLIND/LV ACCESS	PREFERRED LIST	COMMENTS
Atlas Grill & Clubroom 200 South 6th Street 612.332.4200	American	Good	Excellent	Excellent	Poor	Good	Yes Braille menus No Braille signs No good lighting	No good lighting No TTY N/A TV captioning		No accessible handles on restroom doors. Restrooms tight access.
Azia Restaurant/ Caterpillar Lounge 2550 Nicollet Ave South 612.813.1200	Asian	No Access	Good	Average	Good	Average	No Braille menus No Braille signs Yes good lighting	Yes good lighting No TTY N/A TV captioning	Yes	
Barbette 1600 West Lake Street 612.827-5710	American	No Access	Good	Average	Good	Excellent	No Braille menus Yes Braille signs Yes good lighting	Yes good lighting No TTY N/A TV captioning		Has separate restrooms for disabled persons. Toilet paper dispenser industrial size but above grab bars. Braille signage high.
Basil's 710 Marquette Avenue 3rd floor 612.376.7404	American	Average	Excellent	Average	Poor	Good	No Braille menus No Braille signs Yes good lighting	Yes good lighting No TTY N/A TV captioning		
Black Forest Inn 1 East 26th Street 612.872.0812	German	No Access	Poor	Average	Average	Excellent	No Braille menus No Braille signs No good lighting	No good lighting No TTY N/A TV captioning		Front entry has steep incline. Restroom soap dispenser hard to use. Paper towel dispenser too high. Industrial toilet paper holder.
Brit's Pub & Eating Establishment 1110 Nicollet Mall 612.332.3908	British	Average	Good	Good	Good	Excellent	Yes Braille menus No Braille signs Yes good lighting	Yes good lighting No TTY Yes TV captioning		Private parking lot behind building. Door knob on restroom door.
Café Brenda 300 First Avenue North 612.342.9230	Vegetarian	Excellent	Average	Excellent	Good	Excellent	No Braille menus No Braille signs Yes good lighting	Yes good lighting No TTY No TV captioning	Yes	Restrooms not on premises, about 75 feet down a large hallway.

NAME, ADDRESS & PHONE	TYPE	PARKING	ENRANCE	FURNITURE	RESTROOMS	INTERIOR	DEAF/HOH ACCESS	BLIND/LV ACCESS	PREFERRED LIST	COMMENTS
Café Lurcat and Bar Lurcat 1624 Harmon Place 612.486.5500	American	No Access	No Access	Good	No Access	Average	No Braille menus No Braille signs No good lighting	No good lighting No TTY No TV captioning		
Café Luxx 1101 LaSalle Avenue Double Tree Suites 612.492-2221	American	Good	Average	Good	No Restrooms in Café	Average	No Braille menus No Braille signs No good lighting	No good lighting No TTY Yes TV captioning		Street parking/ramp.
Chipotle Mexican Grill 1040 Nicollet Mall 612.659.7956	Mexican/ Southwestern	Average	Good	Excellent	Good	Excellent	No Braille menus No Braille signs Yes good lighting	Yes good lighting No TTY No TV captioning		Bathroom door difficult to open due to door stop pressure.
Dakota Jazz Club and Restaurant 1010 Nicollet Avenue 612.332.1010	American	Good	Good	Excellent	Good	Excellent	No Braille menus Yes Braille signs Yes good lighting	Yes good lighting No TTY No TV captioning		
D'Amico & Sons 2210 Hennepin Avenue 612.374.1858	Italian	Average	Good	Average	Good	Excellent	No Braille menus No Braille signs Yes good lighting	Yes good lighting No TTY N/A TV captioning		
D'Amico & Sons 555 Nicollet Mall 612.342.2700	Italian	Poor	Excellent	Average	Good	Excellent	No Braille menus Yes Braille signs Yes good lighting	Yes good lighting No TTY N/A TV captioning		All low tables. Restaurant on first floor, accessible restrooms on fourth floor.
Fuji Ya Restaurant 600 West Lake Street 612.871.4055	Asian	Good	Good	Good	Good	Excellent	No Braille menus Yes Braille signs Yes good lighting	Yes good lighting No TTY N/A TV captioning	Yes	Mirror in ladies restroom is high. Disability stall has industrial toilet paper dispenser.
Hard Rock Café 600 Hennepin Avenue South 952-285-7625	American	Average	Good	Excellent	Good	Good	Yes Braille menus Yes Braille signs Yes good lighting	Yes good lighting No TTY Yes TV captioning		Street parking/ramp.
Hell's Kitchen 80 South 9th Street 612.332.4700	American	Average	Average	Average	Average	Good	No Braille menus No Braille signs Yes good lighting	Yes good lighting No TTY N/A TV captioning		On-street parking, entry doors narrow, will be propped open in the summer, restroom stall 36" wide.
Hopscotch Grill 600 Hennepin Avenue South, Gameworks 612.656.7311	American	Average	Good	Good	Good	Average	No Braille menus Yes Braille signs Yes good lighting	Yes good lighting No TTY Yes TV captioning		Game rooms have roll on bowling. Lower bar spaces. Not all games wheelchair accessible.

NAME, ADDRESS & PHONE	TYPE	PARKING	ENRANCE	FURNITURE	RESTROOMS	INTERIOR	DEAF/HOH ACCESS	BLIND/LV ACCESS	PREFERRED LIST	COMMENTS
Ichiban Japanese Steak House 1333 Nicollet Mall 612.339.0540	Asian	Average	Good	Average	Good	Average	No Braille menus Yes Braille sign No good lighting	No good lighting No TTY N/A TV captioning		Family restroom is accessible.
Joe's Garage 1610 Harmon Place 612.904.1163	American	Poor	Good	Excellent	Good	Excellent	No Braille menus Yes Braille signs Yes good lighting	Yes good lighting No TTY Yes TV captioning	Yes	Outdoor seating. No rooftop elevator. Two sorts of restrooms, one accessible.
Kieran's Irish Pub 330 2nd Avenue S 612.339.4499	Irish	Average	Average	Average	Poor	Excellent	No Braille menus No Braille signs Yes good lighting	Yes good lighting No TTY Yes TV captioning		Tight entry into restrooms.
Macy's Oak Grill 700 Nicollet Mall 612.375.6542	American	Average	Excellent	Good	Good	Good	No Braille menus No Braille signs No good lighting	No good lighting No TTY N/A TV captioning		All low tables.
Market Bar-B-Que 1414 Nicollet Avenue South 612.872.1111	Barbeque	Average	Good	Average	Good	Good	No Braille menus No Braille signs Yes good lighting	Yes good lighting No TTY Yes TV captioning		Restroom area a little tight.
McCormick and Schmick's Seafood Restaurant 800 Nicollet Mall 612.338.3300	Seafood	Good	Average	Excellent	Good	Good	No Braille menus Yes Braille signs Yes good lighting	Yes good lighting No TTY Yes TV captioning	Yes	Baby changing table in accessible restroom.
Mission America Kitchen & Bar 77 South 7th Street 612.339.1000	American	Excellent	Excellent	Excellent	Good	Excellent	No Braille menus No Braille signs Yes good lighting	Yes good lighting No TTY Yes TV captioning	Yes	
Monte Carlo Bar and Cafe 219 3rd Ave North 612.333.5900	American	No Access	No Access	Average	Poor	Average	No Braille menus No Braille signs Yes good lighting	Yes good lighting No TTY Yes TV captioning		Must phone to gain entry through backdoor. Women's restroom is not accessible.
Murray's 24 South 6th Street 612.339.0909	Steak House	Good	Average	Excellent	Poor	Good	No Braille menus No Braille signs Yes good lighting	Yes good lighting No TTY Yes TV captioning		

NAME, ADDRESS & PHONE	TYPE	PARKING	ENRANCE	FURNITURE	RESTROOMS	INTERIOR	DEAF/HOH ACCESS	BLIND/LV ACCESS	PREFERRED LIST	COMMENTS
Palomino Restaurant-Rotisserie Bar 825 Hennepin Avenue 612.339.3800	American	Average	Good	Excellent	Average	Excellent	No Braille menus No Braille signs Yes good lighting	Yes good lighting No TTY Yes TV captioning		Restroom facilities are in the building but not in the restaurant.
Panera Bread 809 Nicollet Mall 612.338.9850	American	Good	Average	Excellent	Good	Excellent	No Braille menus Yes Braille signs Yes good lighting	Yes good lighting No TTY N/A TV captioning		
Ping's Szechuan Bar & Grill 1401 Nicollet Avenue South 612.874.9404	Chinese	Good	Poor	Average	Poor	Excellent	Yes Braille menus No Braille signs Yes good lighting	Yes good lighting No TTY N/A TV captioning		On-street parking. Incline at entrance. Restrooms have grab bars and levered handle at sink.
Pracna On Main Historic Dining Saloon 117 Main Street SE 612.379.3200	American	Excellent	Good	Average	Good	Excellent	No Braille menus No Braille signs Yes good lighting	Yes good lighting Yes TTY No TV captioning		Toilet paper dispenser mounted above grab bars.
Rock Bottom Restaurant & Brewery 800 LaSalle Plaza 612.332.2739	American	Good	Good	Excellent	Good	Excellent	Yes Braille menus Yes Braille signs Yes good lighting	Yes good lighting No TTY No TV captioning	Yes	
Rudolph's Bar-B-Que 1933 Lyndale Avenue South 612.871.8969	Barbeque	Poor	Good	Excellent	Good	Excellent/ Good	Yes Braille menus Yes Braille signs Yes good lighting	Yes good lighting No TTY Yes TV captioning		
Ruth's Chris Steak House 920 Second Avenue South 612.672.9000	Steak House	Poor	Average	Excellent	Good	Good	No Braille menus No Braille signs Yes good lighting	Yes good lighting No TTY N/A TV captioning		Thick carpet.
Salsa A La Salsa Mexican Grill 1420 Nicollet Avenue 612.813.1970	Mexican / South- western	Average	Good	Average	Good	Excellent	No Braille menus No Braille signs Yes good lighting	Yes good lighting No TTY No TV captioning		Hallway to restrooms a little tight.
The Local-An Irish Pub 931 Nicollet Mall 612.904.1000	Irish	Average	Average	Excellent	Good	Excellent	No Braille menus No Braille signs No good lighting	No good lighting No TTY Yes TV captioning		

NAME, ADDRESS & PHONE	TYPE	PARKING	ENRANCE	FURNITURE	RESTROOMS	INTERIOR	DEAF/HOH ACCESS	BLIND/LV ACCESS	PREFERRED LIST	COMMENTS
The News Room 990 Nicollet Mall 612.343.0073	American	Average	Average	Excellent	Good	Excellent	No Braille menus No Braille signs No good lighting	No good lighting No TTY Yes TV captioning		Difficult passageway to restrooms and poor signage on restroom doors.
Tugg's Tavern 219 SE Main Street 612.379.4404	American	Excellent	Good	Good	Good	Excellent	No Braille menus No Braille signs Yes good lighting	Yes good lighting No TTY Yes TV captioning		Industrial toilet paper holder. Soap dispenser mounted high.
Vic's on the Minneapolis Riverfront 201 SE Main Street 612.312.2000	Seafood	Excellent	Good	Good	Average	Excellent	No Braille menus No Braille signs Yes good lighting	Yes good lighting No TTY N/A TV captioning		
Vincent-A Restaurant 1100 Nicollet Mall 612.630.1189	French / Mediterranean	Good	Average	Excellent	Good	Excellent	No Braille menus No Braille signs Yes good lighting	Yes good lighting No TTY No TV captioning		
Zelo 831 Nicollet Mall 612.333.7000	Italian	Average	Average	Excellent	Good	Average	No Braille menus No Braille signs No good lighting	No good lighting No TTY Yes TV captioning		Hallway to restrooms is narrow.

DOWNTOWN ATTRACTIONS

Visitors with disabilities will be pleased to find that many Minneapolis attractions are wheelchair-accessible. There will be no shortage of things to do and see while you're here.

All of the city's downtown **parks** are accessible. Miles of waterfront, the Minneapolis Sculpture Garden and our regional park system, including Minnehaha Falls, are accessible.

Minneapolis is known for its **theater** scene. Take in a performance at the esteemed Historic Orpheum, the State or Pantages Theatres, Tony Award-winning Guthrie Theater, the Jungle Theater, Ordway Center for the Performing Arts, and many more—all accessible for persons with disabilities.

For **Music** lovers, the Minnesota Orchestra, Minnesota Opera and Ted Mann Concert Hall are all accessible.

To find more complete information on visiting Minneapolis's accessible arts institutions, call 612.332.3888 (TTD/TTY 612.332.3888 or 800.801.3883) or visit <http://mn.vsarts.org>.

Sports fans will enjoy catching a Twins, Timberwolves, Wild, Lynx or Vikings game: and the Target Center, H.H.H. Metrodome and Target Field (2010) are accessible.

EQUIPMENT AND SERVICES

Meet Minneapolis is proud to have businesses that serve those with disabilities. Here are a couple of services you may find helpful:

- + CSD of Minnesota—Provides interpreting services.
651.297.6700.
www.c-s-d.org
- + Dahl Pharmacy—Located two blocks from the Minneapolis Convention Center, Dahl provides wheelchair rentals, emergency prescription services, free prescription delivery, ostomy and medical supplies.
612.333.1593

EQUIPMENT RENTAL

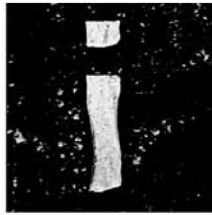
- + Metro Medical
952.854.3603
www.metromedical.net
- + Reliable Medical Supply, Inc.
763.566.4060
www.reliamed.com
- + Mobility Shop
888.404.5554
www.themobilityshop.com
- + Scoot Around
888.441.7575
www.scootaround.com

LINKS & ADDITIONAL INFORMATION

The following websites offer a multitude of information that you may find useful in planning your trip to Minneapolis:

- + Access-Able Travel Source
www.access-able.com/
- + Hennepin Theatre District Accessibility Services
www.hennepintheatredistrict.org/servicesd.asp
- + Access for All
www.accessminnesota.org
- + Housecalls Network
www.housecalls-network.com
- + Accessible Minnesota
www.accessminnesota.org
- + Interpreter Referral
www.interpreterreferral.org
- + Americans with Disabilities Act
www.usdoj.gov/crt/ada/adahom1.htm
- + Metro Mobility
www.metro-mobility.org
- + CSD
www.c-s-d.org
- + **Metrodome FAQs**
www.msfc.com/faq_view.cfm
- + Deafblind Information
www.deafblindinfo.org
- + **Minneapolis Convention Center**
www.mplsconvctr.org/pages/planning/accessibility.asp
- + **Guthrie Theater Access Programs**
www.guthrietheater.org/act_II/access.htm

- + Minnesota Department of Human Services
www.dhs.state.mn.us/main/groups/disabilities/documents/pub/dhs/disabilities.hcsp
- + Minnesota Disability Law Center
www.mndlc.org/index.cfm?pagename=homepage
- + Minnesota State Council on Disability
www.disability.state.mn.us/index.html
- + Minnesota Travel Guide for Persons with Disabilities
www.accessminnesota.org
- + **MSP Airport Accessibility Guide**
www.msairport.com
- + Open the Outdoors
www.dnr.state.mn.us/open_outdoors/index.html
- + **Target Center Disability Services–**
www.targetcenter.com/Disability%20Services.aspx
- + TCDeaf.com
www.tcdeaf.com
- + VSArts of Minnesota
http://mn.vsarts.org



1.800.445.7412 | www.meetminneapolis.com

250 Marquette Avenue South, Suite 1300
Minneapolis, MN 55401

Signature
PARTNERS



 DELTA